

*The last pole barn you'll ever need to buy.  
That is, until you buy your second one.*



**HIGHEST QUALITY METAL POLE BARNs**



## ABOUT MATADOR STRUCTURES

From the company that manufactures the industry's best storm shelters -Survive-A-Storm - Matador Structures offers the best pole barns available at affordable prices.

You will have peace of mind knowing your equipment and supplies are protected under our engineer-approved barns.

With over more than 50 sizes available, you are sure to find a barn that suits your needs.

Our affordable pole barns are designed to withstand the elements, and are installed quickly and easily.







*With the high cost of assets and equipment, our customers tell us they appreciate the solid, dependable space and protection our pole barns provide on their farms and homesteads. Farmers, ranchers and many others with outdoor space recognize the shelters for their durability, telling us it's the last pole barn they'll ever buy - their forever pole barn!*





**AVAILABLE SIZES**  
*EAVE HEIGHTS UP TO 20'*

12' Width	20' Width	24' Width	30' Width	36' Width	40' Width	50' Width	60' Width	Bay Count
12x24	20x24	24x24	X	X	X	X	X	2
12x32	20x32	24x32	30x32	X	X	X	X	2
12x36	20x36	24x36	30x36	36x36	X	X	X	2
12x40	20x40	24x40	30x40	36x40	40x40	X	X	2
12x48	20x48	24x48	30x48	36x48	40x48	X	X	3
12x60	12x60	24x60	30x60	36x60	40x60	50x60	60x60	3
12x80	20x80	24x80	30x80	36x80	40x80	50x80	60x80	4
12x100	20x100	24x100	30x100	36x100	40x100	50x100	60x100	5





Matador metal pole barns are engineered and made in the USA, and known for their durability. With proper maintenance, metal pole barns can last for several decades. It all comes down to materials.

Matador uses red-iron purlins rather than wood, so you don't have to worry about warping or rotting. The durability of metal components contributes to their longevity.

Engineered, angle iron trusses are provided to give you peace of mind that your pole barn will stand the test of time. Matador pole barns can have up to a 20' wide bay spacing, giving you twice the width of most competitors for easier maneuverability.

The roof is on a 4:12 pitch and made of 26-gauge PBR (purlin-bearing R) panels or 29-gauge Ag panels, and the interior space is open and unobstructed, allowing for flexible usage.

Our strong, rough-cut 8" x 8" or 10" x 10" posts have twice the area of a standard 6" x 6" and are 20% larger than standard 8" x 8" posts. All Matador pole barns come standard with a minimum 25-year warranted roof. The posts are warranted for 40 years against rot and decay.

Pole barns can be built in a wide range of sizes, from small units to large agricultural or commercial barns. Custom sizes are available to suit specific needs. At Matador, that means widths of 12', 20', 24', 30', 36', 40', 50', and 60' and lengths of 20' to 300'.

Matador is licensed and insured to operate equipment and crews to guarantee faster installation and a best-in-class experience. The combination of strong metal roofing, angle iron trusses, red iron or galvanized purlins, and treated rough-cut wood posts ensures long-lasting performance.



## CHOOSE YOUR CUSTOMIZATIONS:

Metal pole barns are customizable. They can be tailored to suit your specific requirements in terms of size, and roofing color. You can also customize the color of trim and add enclosed gables.

Matador has 6 in-stock colors and Galvalume, in both 26- and 29-gauge to provide you with rapid turnaround times. Custom colors are available.

From stock trim profiles to custom designs, our CNC-operated equipment guarantees you quality parts each time.

Matador sales reps can give you specific information in regard to your needs. Call us for a customized quote.

## IN STOCK COLORS:



POLAR WHITE  
SR .60 SRI 71



BURNISHED SLATE  
SR .28 SRI 27



GALVALUME  
(STANDARD)



RUSTIC RED  
SR .36 SRI 38



BLACK  
SR .30 SRI 30



EVERGREEN  
SR .34 SRI 35



CHARCOAL GRAY  
SR .27 SRI 261

## CUSTOM COLORS:



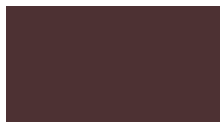
LIGHT STONE  
SR .50 SRI 57



HAWAIIAN BLUE  
SR .32 SRI 32



ASH GRAY  
SR .47 SRI 55



BERRY  
SR .30 SRI 27



COPPER PENNY  
SR .27 SRI 26



COCOA BROWN  
SR .28 SRI 27



CRIMSON RED  
SR .33 SRI 34



DESERT SAND  
SR .42 SRI 47



OLD TOWN GRAY  
SR .42 SRI 47



IVY GREEN  
SR .28 SRI 27



GALLERY BLUE  
SR .27 SRI 26



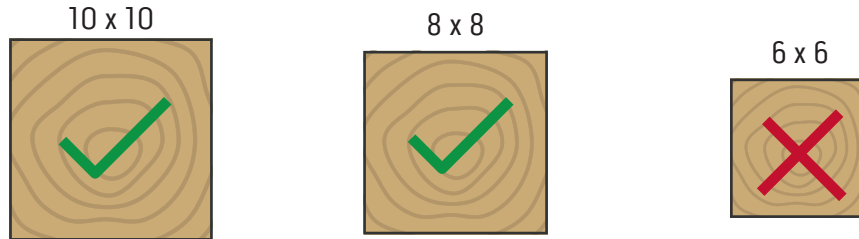
SADDLE TAN  
SR .48 SRI 55



IVORY  
SR .65 SRI 78

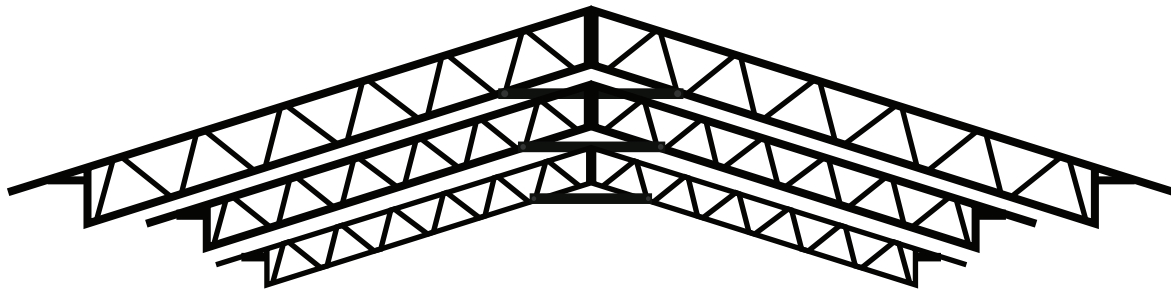
## POSTS

Our barns are built with unmatched strength and reliability. Your barn will come with your choice of 8" x 8" or 10" x 10" posts. Unlike the less sturdy 6" x 6" alternatives, our posts are built to ensure enduring stability for the life of your barn.

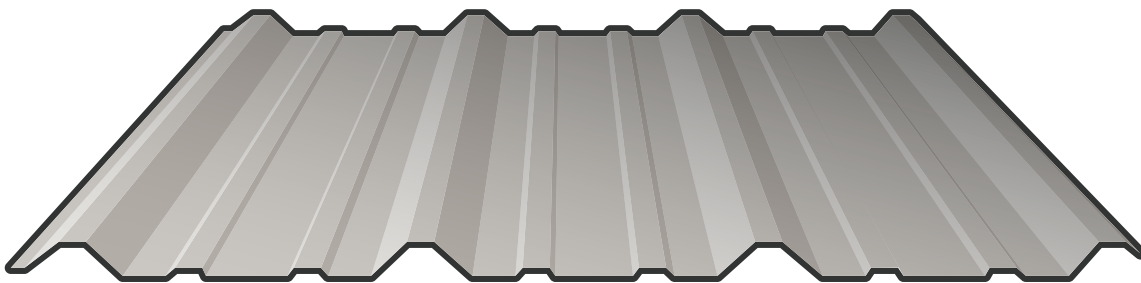


## BLACK ANGLE IRON TRUSSES

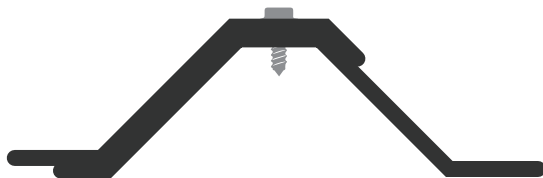
Say goodbye to wood and embrace the durability and paralleled support of our 5/16" angle iron trusses.



## COMMERCIAL GRADE 26GA PBR ROOF PANELS



### *PBR ROOF PANELS*



Our 26-gauge purlin-bearing R panels completely overlap for full metal-to-metal contact, creating stronger connections and enhancing its waterproofing capabilities.

### *R ROOF PANELS*



Other structures have less metal-to-metal contact, which increases the risk of buckling, loose connections and leaks.



RIDGE AND RAKE TRIM

PROTECTIVE STEEL ROOF

BLACK ANGLE IRON TRUSSES

\$3B



NEGOTIATED CONTRACTS

5,000



STRUCTURES BUILT





105-145 MPH WIND RATED OPTIONS

RED IRON PURLINS

20 ROOFING COLOR OPTIONS

3,300



CONTRACTED PROJECTS

\$20M



BONDED CAPACITY



## MORE FEATURES AND UPGRADES

Our pole barns have undergone a remarkable transformation.

Custom designs cater to individual needs, while financing options make them more accessible. Turn-key kits ensure convenience and support, with the industry's quickest lead time for prompt project initiation.

Addressing durability and maintenance concerns, these barns feature termite-resistant metal purlins, galvanized purlins, and trusses that enhance corrosion resistance.

Stability is bolstered by the use of high-quality products, and components that provide protection with aesthetics.

For a refined look and added weather protection, enclosed gables are available.

Matador makes upgrades easy. Lean-tos can be added later as an upgrade when your needs change.

In essence, our pole barns now offer an unmatched combination of versatility, durability, and style, making them a premier choice in construction.





A green tractor with large, muddy tires is parked under a large, open-sided pole barn. The barn has a metal roof and wooden support posts. The ground is muddy with tire tracks. In the background, there are trees and a clear blue sky with some clouds.

## **POLE BARNS**

*FOR ALL OF YOUR  
STORAGE NEEDS*

- *Tractors and Implements*
- *Crop Storage*
- *RVs/Campers*
- *Boats*
- *Car Ports*
- *Equipment Storage*
- *Workshops*
- *Pavillions*
- *Horse Barns*





121 Industrial Blvd.,  
Thomasville, Georgia 31792



1-888-276-7976



[MatadorStructures.com](http://MatadorStructures.com)



**MATADOR**  
STRUCTURES

SCAN HERE  
FOR WEBSITE

